

## Gyrostat Downside Protection Australian Equities Fund

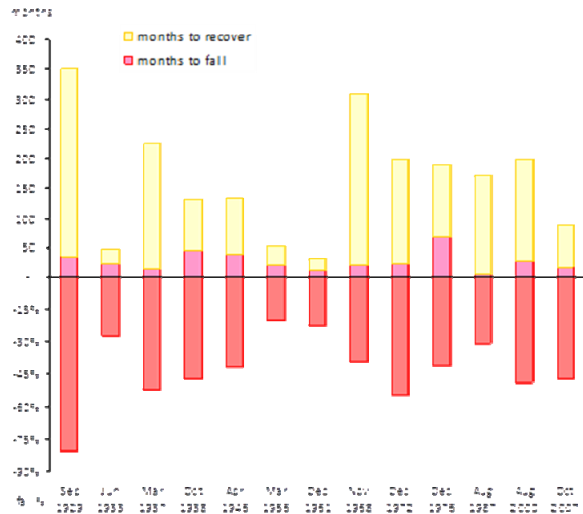
Markets fall and stay down for significant periods

The graph shows the extent of falls from peak to trough, the duration of the fall, and time taken to recover to pre fall highs.

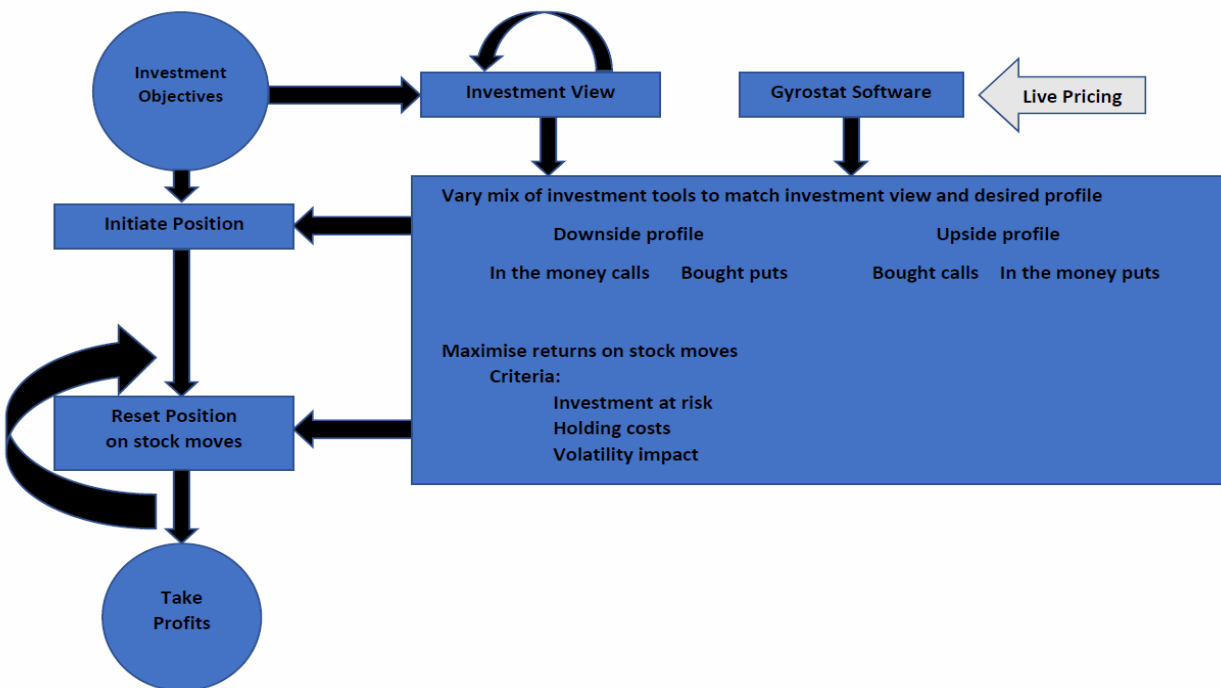
**S&P 500 Index - 90 Year Historical Chart:**  
Peak to trough falls > 20%, duration of falls, time to recover to pre fall levels

Source:

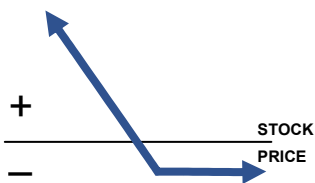
<http://www.macrotrends.net/2324/sp-500-historical-chart-data>



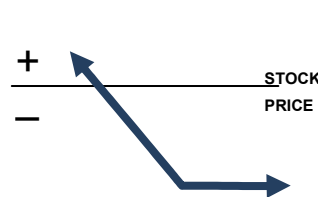
## Gyrostat Investment Risk Managed Framework



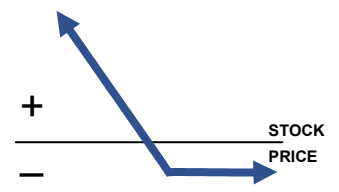
Initiate position



Market Fall 10% one off



Reset



- Keep your existing investments and add 5% to Gyrostat
- Downside fund is designed to increase in value on market falls, especially large one off falls, without capping upside in rising markets

- For illustration on a one off 10 pc the protection increases in value, increasing the Fund NAV
- Options must be actively managed (reset) to take profits and distribute to investors

- Selling some protection resets the risk-return objectives